

EQUIP. TYPE *R390A/URR* EXP. NO.

~~COL 540 7453 002~~

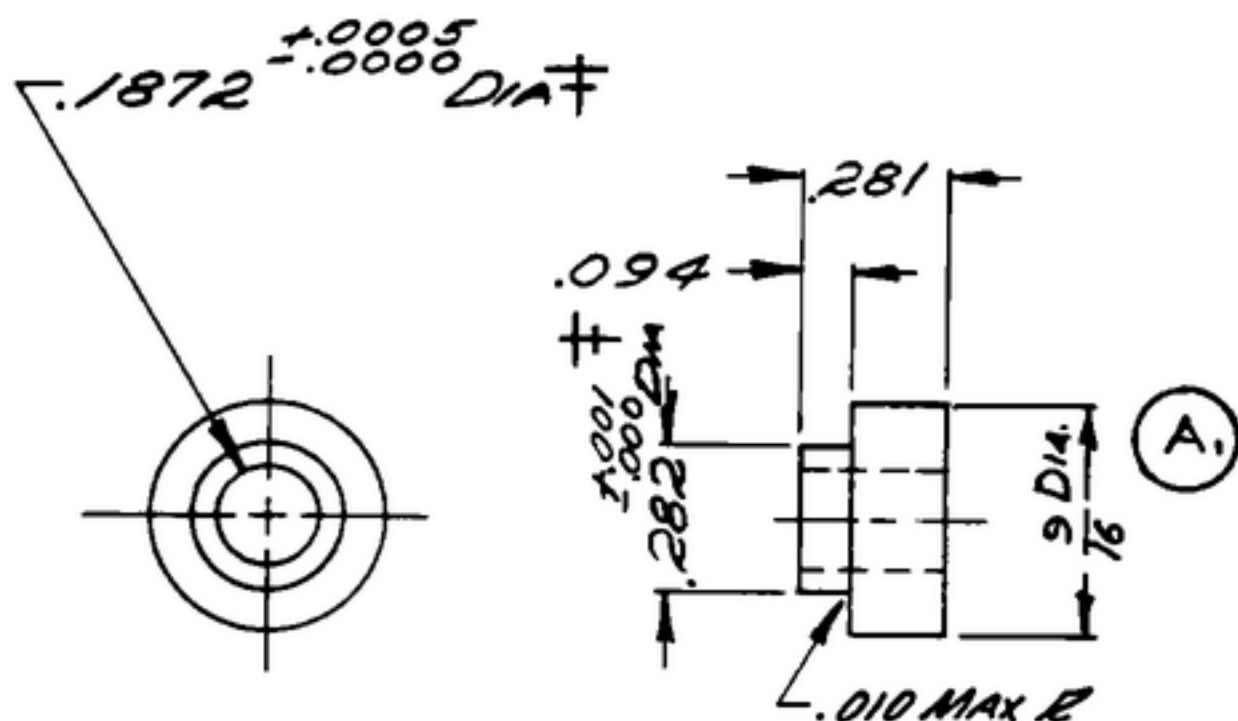
NOTICE: WHEN GOVERNMENT DRAWINGS, SPECIFICATIONS, OR OTHER DATA ARE USED FOR ANY PURPOSE OTHER THAN IN CONNECTION WITH A DEFINITELY RELATED GOVERNMENT PROCUREMENT OPERATION, THE UNITED STATES GOVERNMENT THEREBY INCURS NO RESPONSIBILITY NOR ANY OBLIGATION WHATSOEVER AND THE FACT THAT THE GOVERNMENT MAY HAVE FORMULATED, FURNISHED, OR IN ANY WAY SUPPLIED THE SAID DRAWINGS, SPECIFICATIONS, OR OTHER DATA IS NOT TO BE REGARDED BY IMPLICATION OR OTHERWISE AS IN ANY MANNER LICENSING THE HOLDER OR ANY OTHER PERSON OR CORPORATION, OR CONFERRING ANY RIGHTS OR PERMISSIONS TO MANUFACTURE, USE, OR SELL ANY PATENTED INVENTION THAT MAY IN ANY WAY BE RELATED THERETO.

THIS DOCUMENT HAS BEEN PURCHASED BY THE GOVERNMENT AND MAY BE REPRODUCED AND USED IN CONNECTION WITH ANY GOVERNMENT PROCUREMENT OR MAINTENANCE OPERATION.

*FOR INFORMATION ONLY. CONTRACTOR MAY AT HIS OPTION DEVIATE FROM THESE PROCESS DETAILS.

~~*SWE APPROVAL
SYM PR 10042-5~~

REVISIONS			
SYM	DESCRIPTION	DATE	APPROVAL
A1	A. 9/16 WAS 7/16	9 OCT 59	42428-PC 59-A1-51 REV'D PME



CRE5, COMP. 3035, COND. B, PER SPEC. MIL-S-7720, SURFACE COND. d.

FINISH: E300 PER SPEC. MIL-F-14072.

* ~~COLLINS 580 0025 00~~

NOTES:

1. ECCENTRICITY BETWEEN DIAMETERS MARKED \neq SHALL NOT EXCEED .002 TIR.

COLLINS PART NO.	ITEM	QTY	PART NO.	DESCRIPTION	MATL.	MATL. SPEC.
LIST OF MATERIAL						
COLLINS PART NO. <i>558 0241 002</i>						

<table border="1"> <tr> <td>COLLINS NO.</td> <td>QTY</td> <td>NEXT ASSY</td> <td>USED ON</td> </tr> <tr> <td><i>558 0286 002</i></td> <td><i>1</i></td> <td><i>SM-B-248892</i></td> <td><i>SC-DL-248775</i></td> </tr> </table>				COLLINS NO.	QTY	NEXT ASSY	USED ON	<i>558 0286 002</i>	<i>1</i>	<i>SM-B-248892</i>	<i>SC-DL-248775</i>	DRAWN <i>Hammer</i> CHECKED <i>Ph</i> APPROVED UNLESS OTHERWISE SPECIFIED: DECIMAL DIMENSIONS INCLUDING HOLE SIZES MAY VARY $\pm .008$ FRACTIONAL DIMENSIONS INCLUDING HOLE SIZES MAY VARY $\pm 1/64$ MACHINED ANGLES MAY VARY $\pm .1^\circ$ SHEARED ANGLES MAY VARY $\pm .25^\circ$ BROKEN ANGLES MAY VARY $\pm 1^\circ$ ECCENTRICITY BETWEEN ANY DIAMETERS ON THE SAME CENTERLINE SHALL NOT EXCEED .010 TOTAL INDICATOR READING. ALL DIMENSIONS ARE FINISH DIMENSIONS INCLUDING APPLIED FINISH AND ARE GIVEN IN INCHES.	COLLINS-RADIO CO. CEDAR RAPIDS, IOWA 14214-PH-51-93 SIGNAL CORPS REVIEWED <i>PME</i> APPROVED <i>HLV</i> <i>PME</i> DATE <i>7 DEC 55</i>	HUB-GEAR SCALE <i>E/1</i>	DEPARTMENT OF THE ARMY SIGNAL CORPS ENGINEERING LABORATORIES FORT MONMOUTH NEW JERSEY SM-B-248892
COLLINS NO.	QTY	NEXT ASSY	USED ON												
<i>558 0286 002</i>	<i>1</i>	<i>SM-B-248892</i>	<i>SC-DL-248775</i>												